



Basic Cabinet Hardware Jig and Case

Part Number: TP-1934

Cabinet Hardware Jig + Case

Install Knobs and Handles without the tedious hours of measuring or making jigs
– Fast, accurate hardware installation in seconds, every time.

Product Description

Introducing the TP-1934, the most accurate and versatile hardware jig on the market.

Built for speed, this tool doesn't require marking or clamping. Created from a superior, hardened anodized aluminum that comes equipped with laser engraved rulers and case hardened bushings, its durability shockingly isn't its greatest feature. Supported by a money back guarantee, the TP-1934 delivers a proven, step-by-step formula of accuracy, saving anyone who uses it from costly replacement do-over's.

True Position Tools has invested heavily in designing the tool so both professional tradesmen and DIY'ers alike can realize the benefits after just one project. Our customers have been delighted to recognize the hours of labor and cost savings that result in just their first project, by using our product instead of other methods or instruments.

Product Advantages

- Install handles up to 300mm (12 inches) Centre to Centre
- Most accurate & fastest on the market!
- Versatile - Hinge Plates + Shelf Pin holes
- Calibrated to .001 square, Precision Guarantee
- Bushings backed by Lifetime Warranty

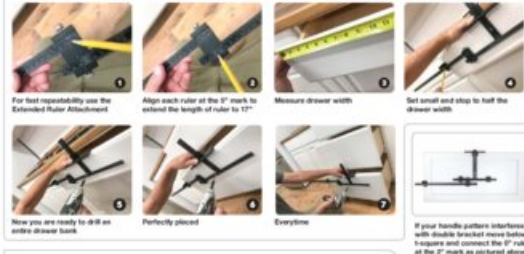
Included Products

- T-Square w/ Center Bushing
- Large Stop
- 2x Sliding Drill Guides
- Sliding End Stop
- 5mm Drill Bit
- Blow Molded Carrying Case



Technical Documents

USING EXTENDED RULER ATTACHMENT (TP-ERA) ON DRAWER



LARGE HANDLE ON WIDE DRAWER FRONT



TRUE POSITION TOOLS

A guide to using True Position Tools Hardware Jigs

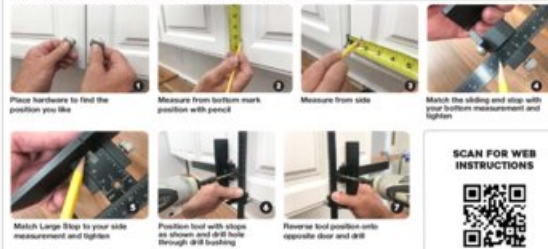
- Always secure sliding guides and stops in position and tighten before drilling.
- Be sure to wear proper safety gear when using power tools
- Make sure hands are out of the way when drilling



See more

www.truepositiontools.com

KNOB ON DOOR INSTALLATION



HANDLE ON DOOR INSTALLATION



View this product online at <https://marathonhardware.com/pd/TP-1934>

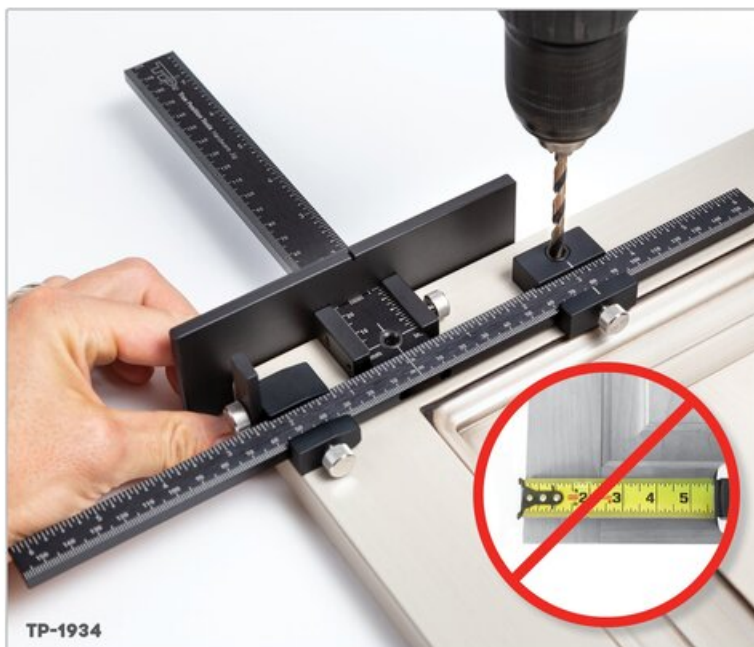
Technical Documents



1 Set Hardware Spacing



2 Adjust Location



3 Hold & Drill

View this product online at <https://marathonhardware.com/pd/TP-1934>



Technical Documents



View this product online at <https://marathonhardware.com/pd/TP-1934>

