

Float One Way Connector Raw

Part Number: 086-Z0ZXE-MB

This hidden connector allows you to connect two bars at a 90 degree angle, with no visible connector piece. Hardware included. Requires Rivet Gun to install (not included).

Finish -----

Matte Black

Product Description

Eureka FLOAT is a chic, wall mounted modular shelving system that is extremely versatile and customizable. FLOAT can be arranged in virtually any configuration you can imagine via the multitude of available connectors. FLOAT shelving system can be cut-to-size and assembled into countless designs to either “float” on the wall, or integrate into new or existing cabinetry.

Important Information

This hidden connector requires a Rivet Gun Tool to install. All hardware needed (M4 rivets, screws) is included.

Product Application

Shelf Dimensions

Wood Shelf:

- Length minus 42mm
- Depth minus 42mm

Glass Shelf:

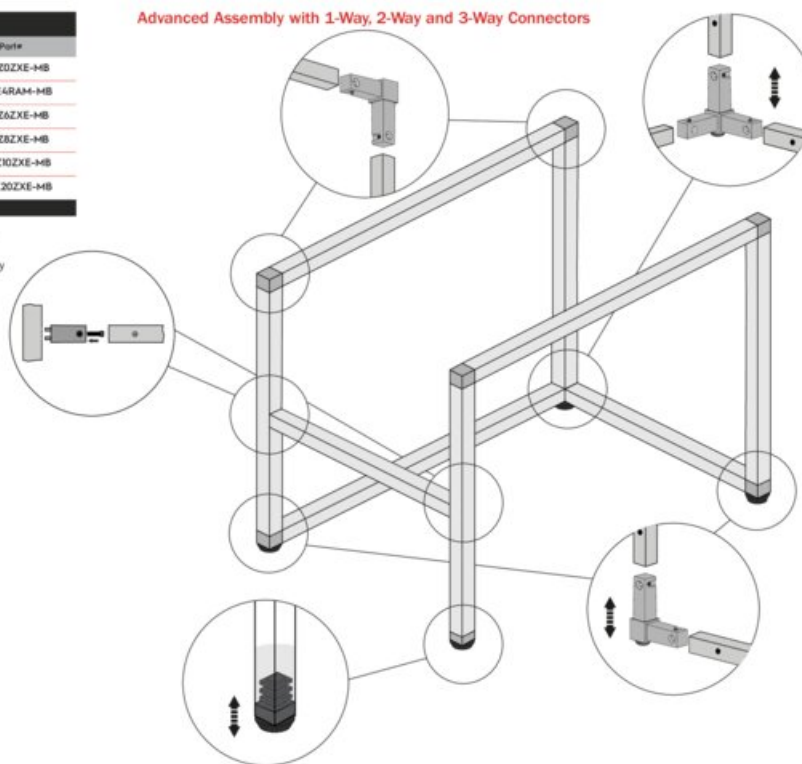
- Length minus 42mm
- Depth minus 45mm

Technical Documents

Eureka FLOAT Corner Connectors	
Item Description	Part #
1 Way Hidden Connector, Bare Metal	086-Z0ZXE-MB
1 Way Leg with Adjust. Foot, Matte Black	086-E4RAM-MB
2 Way Corner, Matte Black	086-Z6ZXE-MB
2 Way Corner w/ Adjust Feet, Matte Black	086-Z8ZXE-MB
3 Way Corner A Side with Adjust. Foot	086-Z10ZXE-MB
3 Way Corner B Side with Adjust. Foot	086-Z20ZXE-MB

- 3-Way Corners are not directionally specific. Use 1 of each type (A/B) at each ends of bar that connects in between. See assembly examples for further direction.
- Screws are included with Corner Connectors. Extras intended for spares.

Advanced Assembly with 1-Way, 2-Way and 3-Way Connectors



View this product online at <https://marathonhardware.com/pd/086-Z0ZXE-MB>



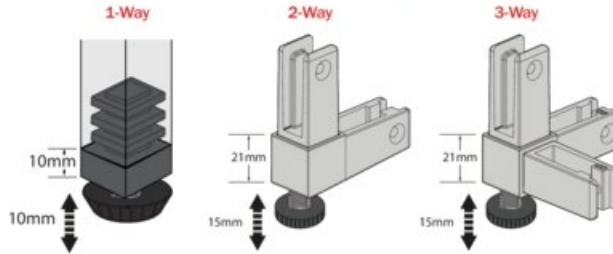
Technical Documents

Eureka FLOAT 1-Way, 2-Way & 3-Way Corner Connectors

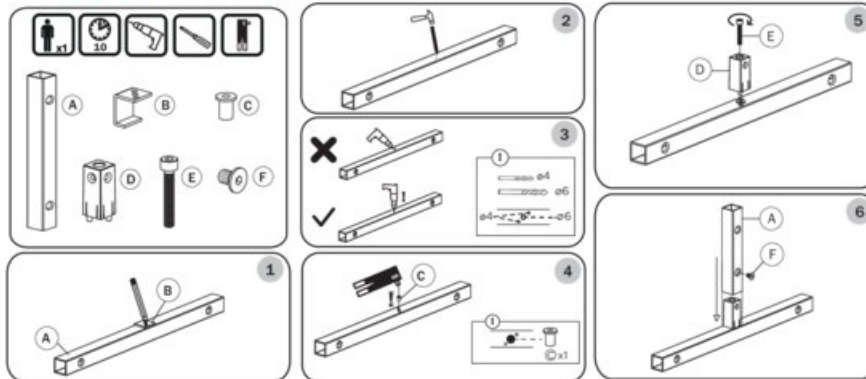
Item Description	Part#
1 Way Hidden Connector, Bare Metal	086-Z0ZXE-MB
1 Way Leg with Adjust. Foot, Matte Black	086-E4RAM-MB
2 Way Corner, Matte Black	086-Z6ZXE-MB
2 Way Corner w/ Adjust Feet, Matte Black	086-Z6ZXE-MB
3 Way Corner A Side with Adjust. Foot	086-Z10ZXE-MB
3 Way Corner B Side with Adjust. Foot	086-Z20ZXE-MB

- 1-Way Leg with Adjustable Foot adds 10mm to the length of your bar and provides an additional 10mm of adjustment range.
- 2-Way and 3-Way Connectors with Adjustable Feet, have the same dimensions as standard connectors, with 15mm of adjustable range.
- Screws are included with Corner Connectors. Extras intended for spares.

Leveller Feet Dimensions and Adjustment Range



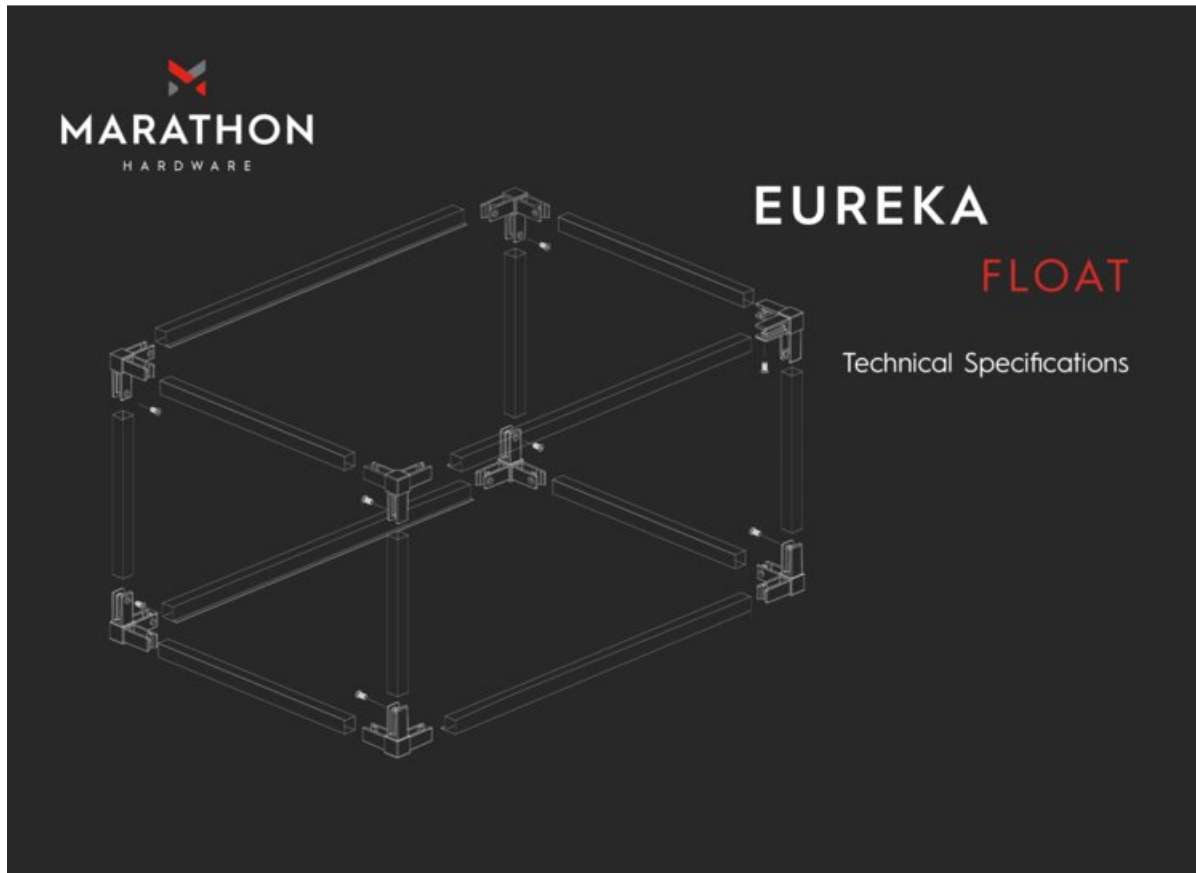
Installation Instructions for 1-Way Hidden Connector



View this product online at <https://marathonhardware.com/pd/086-Z0ZXE-MB>



Technical Documents



View this product online at <https://marathonhardware.com/pd/086-Z0ZXE-MB>



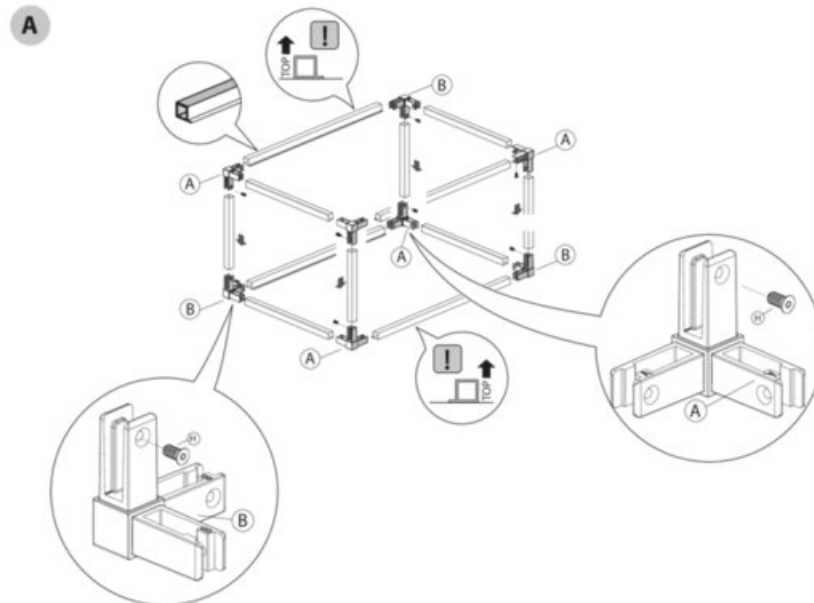
Technical Documents



FLOAT



INSTRUCTIONS



View this product online at <https://marathonhardware.com/pd/086-Z0ZXE-MB>

