



Spacer Open-Limit for C-80 and C-81 Soft-Close Hinges

Part Number: 105-86S80

DTC Spacer Open-Limit for C-80 and C-81 Soft-Close Hinges

This angle stop works for DTC C-80 and C-81 110 degree hinges to limit the opening angle to 86 degrees. Prevent cabinet doors from hitting other objects that protrude in the open path.

Angle -----

86

Product Description

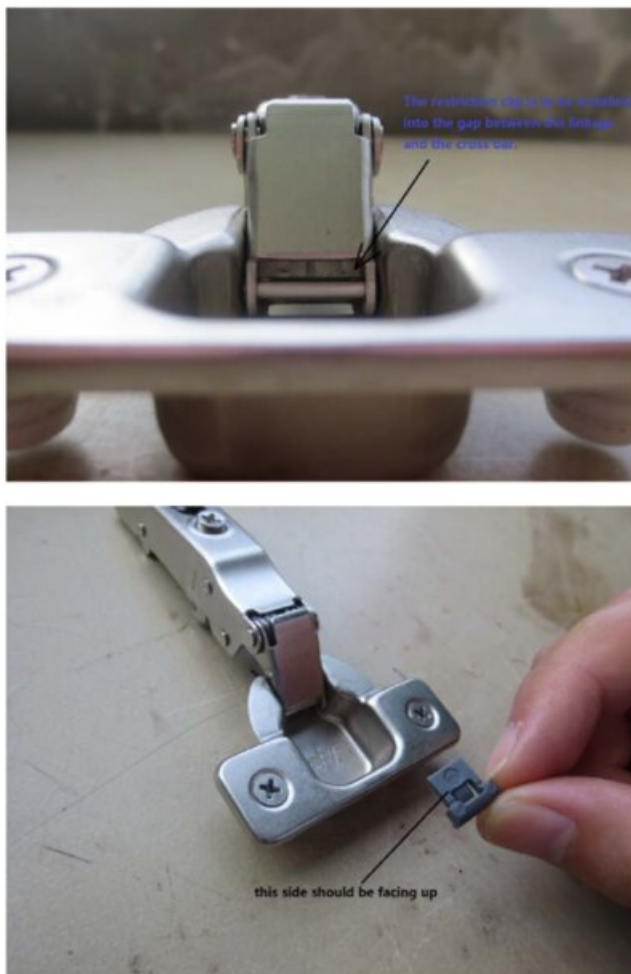
Plastic insert that is pushed into the hinge cup to prevent the hinge from opening more than 86 degrees. Compatible with DTC C-80 and C-81 Series Soft-Close 110 degree hinges only.

Product Advantages

- Easy to insert
- Limits opening angle
- Angle Stop



Technical Documents



View this product online at <https://marathonhardware.com/pd/105-86S80>

