



Extended Ruler Attachment



Part Number: TP-ERA

Extended Ruler Attachment for Cabinet Hardware Jig

The extended ruler attachment eliminates the need to center your cabinet hardware jig on every drawer front which greatly speeds up hardware installation.

- Provides a measurable stop for large handles on a door
- Fits all TP Cabinet Hardware Jigs
- Metric and Imperial

Product Description

The extended ruler attachment eliminates the need to center your Cabinet Hardware Jig on every drawer front which greatly speeds up hardware installation. Attaches to Hardware Jig for quicker centering on wide drawer fronts or tall doors. Also allows adjustable starting point for line boring in assembled cabinets (please note this feature requires extension set TP-2312 or TP-1935 with marked center lines, 2016 and newer). Includes 17-1/2" ruler w/ 2 sided print, bracket for T-square connection, 2 extra thumbscrews for attaching to extension set. Fits all TP Hardware Jigs. Included ruler attachment provides a stop for drawer fronts up to 42" wide.

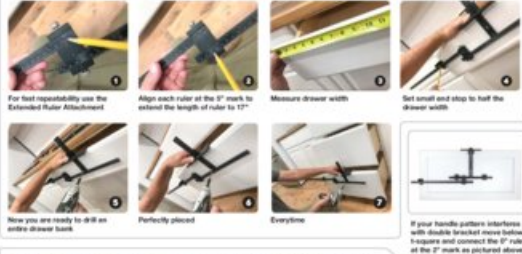
Included Products

- 17-1/2" ruler w/ double sided print
- Double Bracket
- 2x Thumbscrews



Technical Documents

USING EXTENDED RULER ATTACHMENT (TP-ERA) ON DRAWER



LARGE HANDLE ON WIDE DRAWER FRONT



TRUE POSITION TOOLS

A guide to using True Position Tools Hardware Jigs

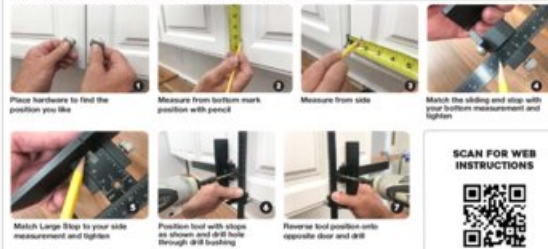
- Always secure sliding guides and stops in position and tighten before drilling.
- Be sure to wear proper safety gear when using power tools
- Make sure hands are out of the way when drilling



See more

www.truepositiontools.com

KNOB ON DOOR INSTALLATION



HANDLE ON DOOR INSTALLATION



View this product online at <https://marathonhardware.com/pd/TP-ERA>

